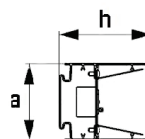
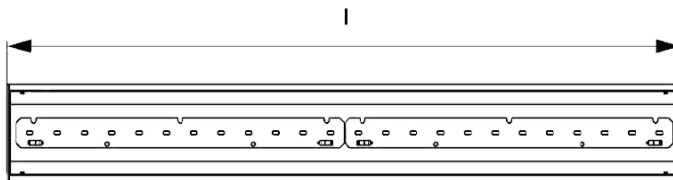




Exe Holding - CORP DE ILUMINAT LINIAR APLICAT E 45, UGR<19



DATE ELECTRICE

Voltage [V]	220 - 240
Frecventa [Hz]	50 / 60
Putere [W]	13.6 - 68
Sursa	LED

DATE FOTOMETRICE

Flux luminos [lm]	2170 - 10850
Optica [°]	50° / 80°
CRI [RA]	>80
CCT[K]	2700-6500

DATE TEHNICE

Montaj	APLICAT
Material	ALUMINIU
Finisaj	ALB / NEGRU / SILVER
Protectie [IP]	40
Durata medie [h]	50.000

DIMENSIUNI

Dimensiuni	Putere	Flux luminos
565x45x88	2x6.8W	2170lm
845x45x88	3x6.8W	3255lm
1125x45x88	4x6.8W	4340lm
1405x45x88	5x6.8W	5425lm
1685x45x88	6x6.8W	6510lm
1965x45x88	7x6.8W	7595lm
2245x45x88	8x6.8W	8680lm
2525x45x88	9x6.8W	9765lm
2805x45x88	10x6.8W	10850lm





EXE Green Holding - Energy Efficiency Solutions



Bucharest, Romania Office: Aeroportului Str., No. 141th, Mogosoia, Ilfov, Romania, PO Box 077135

Vienna, Austria Office: Martin Str., No 51st, Vienna, Austria, PO Box 1180

London, United Kingdom Office: 3rd The Shrubberies, George Lane, South Woodford, London, PO Box E18 1BG

New York, USA Office: 46-12 Queens Blvd. No. 205th, Sunnyside, NY., USA, PO Box 11104

WEB: www.exeholding.com **E-mail:** office@exeholding.com